

HAMMOND MERCURY TRIMOSAW

PARTS AND SUPPLY BULLETIN M-941

FLOOR MODEL M-5 AND BENCH MODEL M-4

For
BEN FRANKLIN
TRIMOSAW
Models
BG-60
BFG-75
PARTS AND
SUPPLIES
See Page 4

FLOOR MODEL M-5

BASE AND TABLE

- 230-B Table.
- 237-B Table door.
- 239-B Base.
- 244-B Mercury emblem with screws.
- 245-B Motor pulley 60 cycle motor.
- 246-B Motor pulley 25 cycle motor.
- B-543 Extension arm.
- B-557 Micrometer gauge stop.
- B-597 Saw door washer.
- BX-300 Name plate with screws.
- BX-303 Single phase switch.
- BX-304 3 Phase switch.
- MS-850 Table extension pin.
- MX-500 V-Belt.
- SC-510 Adjusting screw for MS-850.
- T-124 Chip buggy handle.
- TS-381 Saw door pin.
- TX-213 Chip buggy.

SAW RAISING DEVICE

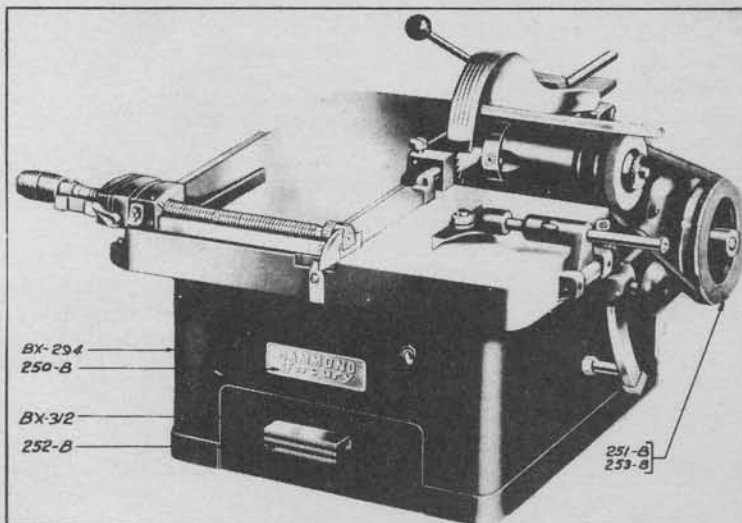
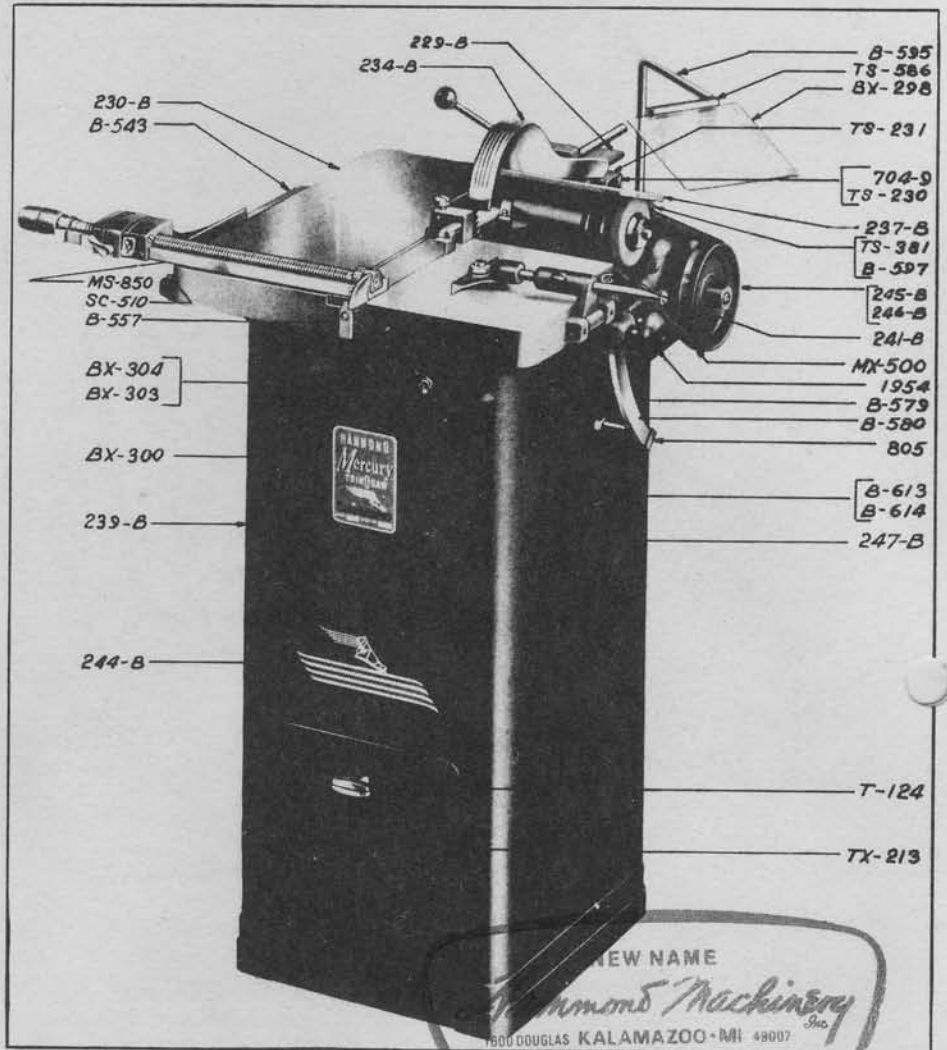
- 227-B Raising arm rocker shaft collar.
- 241-B Trimming position stop.
- 247-B Saw arbor raising arm.
- B-422-1 Raising arm rocker shaft.
- B-579 Locking nuts.
- B-580 Saw raising quadrant.
- B-581 Top quadrant stud.
- B-582 Lower quadrant stud.
- B-587 Locking stud pin.
- B-613 Self adjusting nut.
- B-614 Self adjusting washer.
- 805 Rubber bumper with screw.
- 1954 Plastic handle.

SAW GUARD

- 229-B Saw guard bracket.
- 234-B Saw guard with bushing.
- TS-230 Saw guard slotted head screw.
- TS-231 Saw guard brass plug.
- 704-9 Spring washer.

SEE THRU GUARD

- BX-298 See thru pyralin.
- TS-586 See thru guard holder.
- B-595 See thru guard arm.



BENCH MODEL M-4

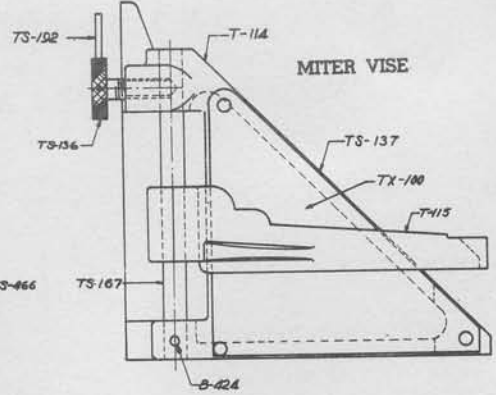
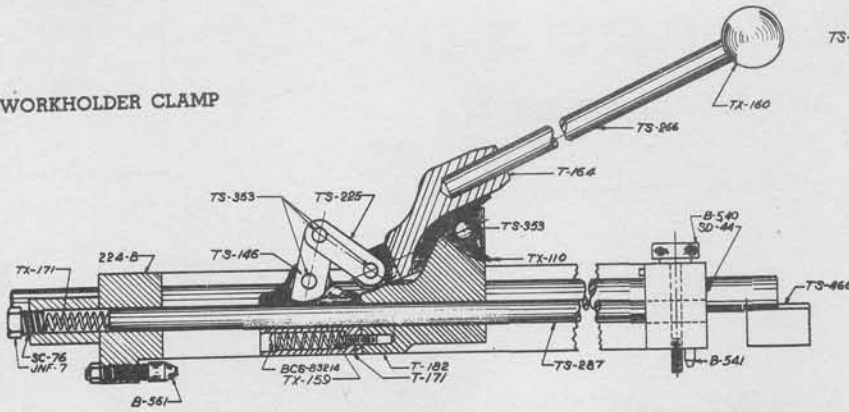
For parts not numbered see both floor model and inside spread.

- 250-B Name plate.
- 251-B Motor pulley 60 cycle motor.
- 252-B Chip drawer handle.
- 253-B Motor pulley 25 cycle motor.
- BX-294 Base.
- BX-312 Chip drawer.

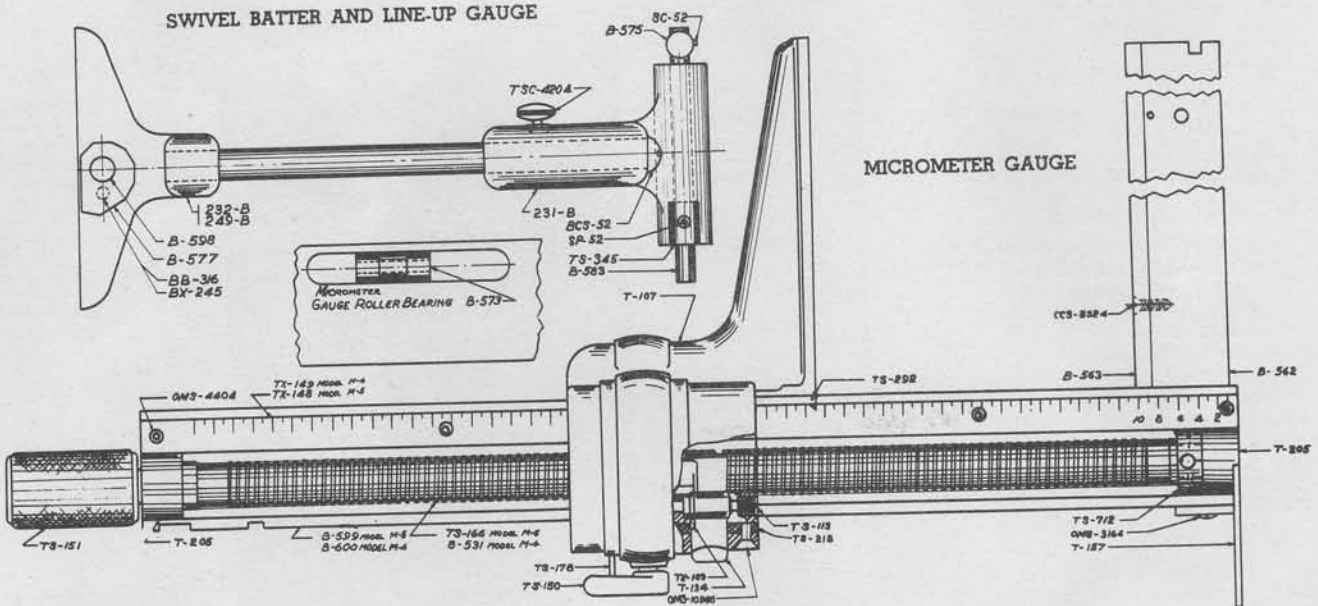
Hammond of Kalamazoo
HAMMOND MACHINERY BUILDERS, INC.
1600 DOUGLAS AVE. • • • KALAMAZOO, MICHIGAN

SEE INSIDE SPREAD FOR PARTS NOT NUMBERED ON THESE VIEWS

WORKHOLDER CLAMP



SWIVEL BATTER AND LINE-UP GAUGE



MICROMETER GAUGE

WORK HOLDER CLAMP

- 224-B Clamp frame.
- SC-76 Pressure spring adjusting scw.
- SD-44 Holding screw for clamp lock screw.
- TS-146 Clamp jaw.
- TS-225 Toggle link.
- TS-266 Toggle lever handle.
- TS-287 Clamp rod.
- TS-353 Hinge pin with cotter keys.
- TS-466 Clamp rod with end attached.
- TX-110 Handle spring.
- TX-159 Clamp loading spring.
- TX-160 Lever handle ball.
- TX-171 Pressure spring.
- B-540 Clamp lock screw.
- B-541 Locating plug.
- B-561 Clamp adjust. screw with nut.
- T-164 Toggle lever.
- T-171 Clamp.
- 182 Bracket.
- F-7 Pressure spring screw lock nut.
- BCS-83214 Clamp loading spring screw.

MITER VISE

- TS-136 Knurled screw.
- TS-167 Miter vise rod.

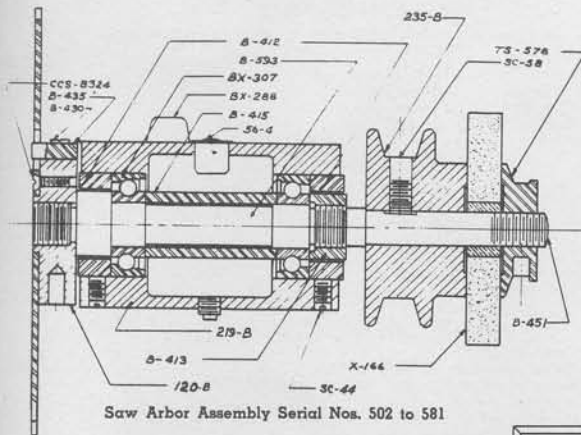
- TS-192 Knurled screw pin.
- TX-100 Instruction plate with screws.
- B-424 Pin.
- T-114 Miter vise.
- T-115 Miter vise clamp.

SWIVEL BATTER AND LINE-UP GAUGE

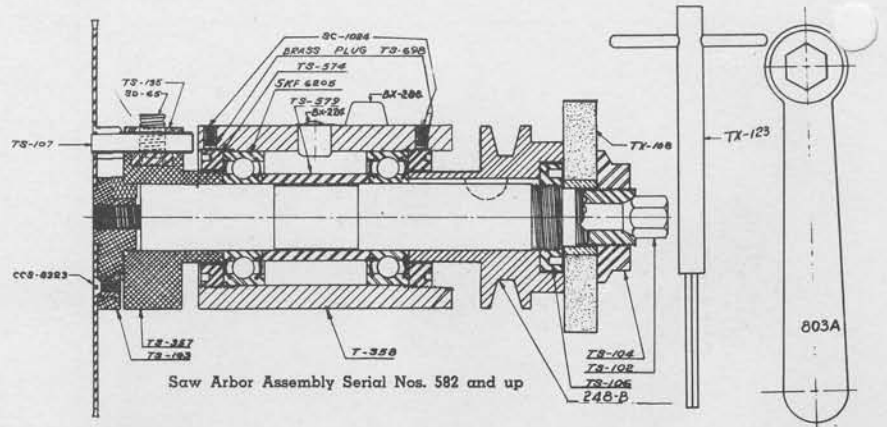
- 231-B Batter rod holder.
- 232-B Batter with dial and rod.
- 249-B Batter with rod—(Not machined for dial.)
- BCS-52 Batter rod screw.
- TSC-4204 Thumb screw.
- BB-316 Dial ball.
- BX-245 Dial ball spring.
- SC-52 Pilot plug screw.
- SP-52 Bushing set screw.
- TS-345 Bushing for holder.
- B-575 Shaft pilot plug.
- B-577 Dial.
- B-583 Batter rod holder shaft.
- B-598 Dial pin.

MICROMETER GAUGE

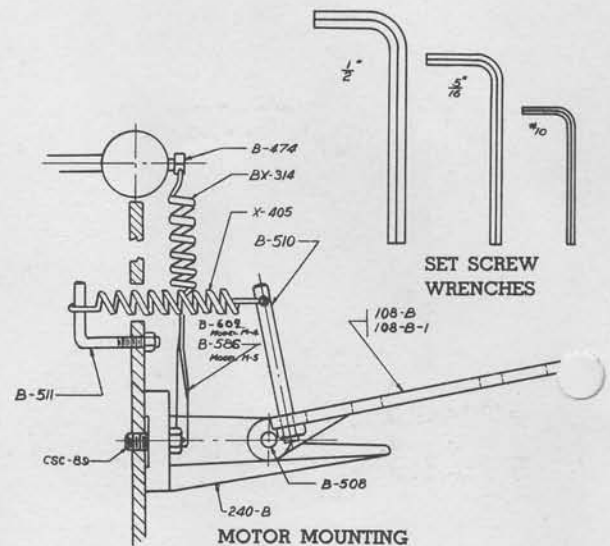
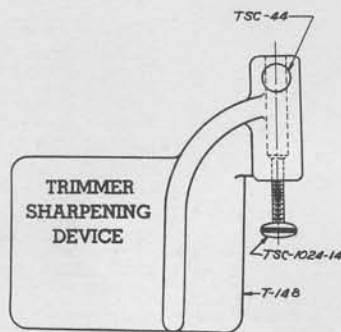
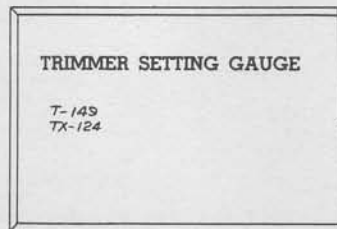
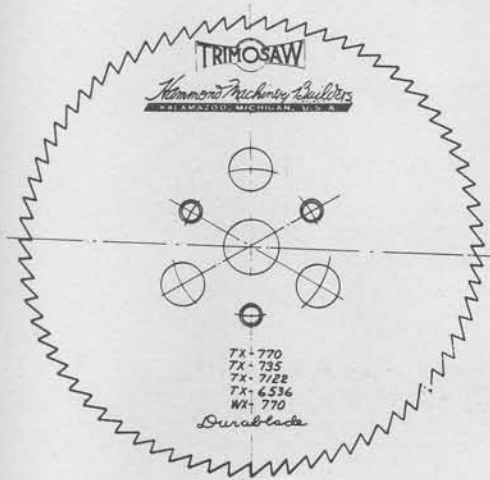
- CCS-8324 Slot bar screw.
- OMS-3164 Thumb guard screw.
- OMS-4404 Pica scale screw.
- OMS-10246 Finger wearing plate screw.
- BB-316 Dial ball.
- BX-269 Dial spring.
- TS-113 Finger nut adjusting sleeve.
- TS-150 Handle with screw.
- TS-151 Screw hand wheel.
- TS-164 Finger nut pin.
- TS-166 Micrometer gauge—Model M-5.
- TS-178 Handle stop pin.
- TS-218 Finger wearing plate.
- TS-247 Dial spring plug.
- TS-292 Pointer and screw.
- TS-698 Dial brass plug.
- TS-712 Dial.
- TX-109 Finger nut spring.
- TX-148 Pica scale—Model M-5.
- TX-149 Pica scale—Model M-4.
- B-531 Micrometer gauge—Model M-4.
- B-562 Slot bar.
- B-563 Take-up slot bar.
- B-573 Gauge roller bearing.
- B-599 Gauge bar—Model M-5.
- B-600 Gauge bar—Model M-4.
- T-107 Finger.
- T-134 Finger nut.
- T-157 Thumb guard.
- T-205 End bearing with bushing.



Saw Arbor Assembly Serial Nos. 502 to 581



Saw Arbor Assembly Serial Nos. 582 and up



SAW ARBOR ASSEMBLY

Mercury Serial Nos. 502 through 581

- 56-4 Oil cup.
- 120-B Saw and trimmer head.
- 219-B Saw arbor housing.
- 235-B Pulley.
- BX-288 Rubber bumper with screw.
- BX-307 Ball bearing.
- SC-44 Set screw.
- TS-578 Grinding wheel nut.
- B-412 Bearing collar.
- B-413 Arbor lock nut.
- B-415 Ball bearing spacer.
- B-430 Trimming tool locking screw.
- B-435 Trimming tool.
- B-451 Saw arbor.
- B-593 Bearing spacer.
- X-166 Grinding wheel.
- CCS-8324 Saw mounting screw.

SAW ARBOR ASSEMBLY

Mercury Serial Nos. 582 and up

- 248-B Pulley.
- 803-A Box wrench.
- BX-224 Saw arbor oiler.
- BX-288 Saw door bumper and screw.
- SC-1024 Screw.
- SD-65 Trimmer lock screw.

- TS-102
- TS-103
- TS-104
- TS-106
- TS-107
- TS-135
- TS-357
- TS-574
- TS-579
- TS-698
- TX-108
- TX-123
- TX-380
- SKF-6205
- CCS-8323
- T-358

- Sawhead bolt.
- Sawhead.
- Grinding wheel nut.
- Pulley nut.
- Trimmer tool.
- Trimmer wedge plug.
- Saw arbor with head.
- Bearing retainer screw.
- Bearing spacer.
- Brass plug.
- Grinding wheel.
- "T" wrench
- Chip guard.
- Arbor ball bearing.
- Saw blade screw.
- Saw arbor housing.

SAW BLADES

- TX-735 7" dia. 35 swage tooth stereotype Dura-Blade.
- TX-770 7" dia. 70 swage tooth metal Dura-Blade.
- WX-770 7" dia. 70 set tooth wood Dura-Blade.
- TX-7122 7" dia. 122 set tooth zinc Dura-Blade.
- TX-6536 6½" dia. 36 tooth all purpose blade.

TRIMMER SETTING GAUGE

- TX-124 Instruction plate with screws.
- T-149 Trimmer setting gauge.

TRIMMER SHARPENING DEVICE

- TSC-1024-14 Adjusting screw.
- TSC-44 Thumb screw.
- T-148 Grinding device.

MOTOR MOUNTING

- 108-B Motor plate for 1/3 H.P. motor.
- 108-B-1 Motor plate for 1/2 H.P. motor.
- 240-B Motor plate bracket.
- CSC-89 Motor plate bracket screw.
- BX-314 Saw hanger spring.
- B-474 Balance spring screw.
- B-508 Hinge pin with cotter keys.
- B-510 Spring stud with nut.
- B-511 Spring post.
- B-586 Spring strap—Model M-5.
- B-609 Spring strap—Model M-4.
- X-405 Motor tension spring.

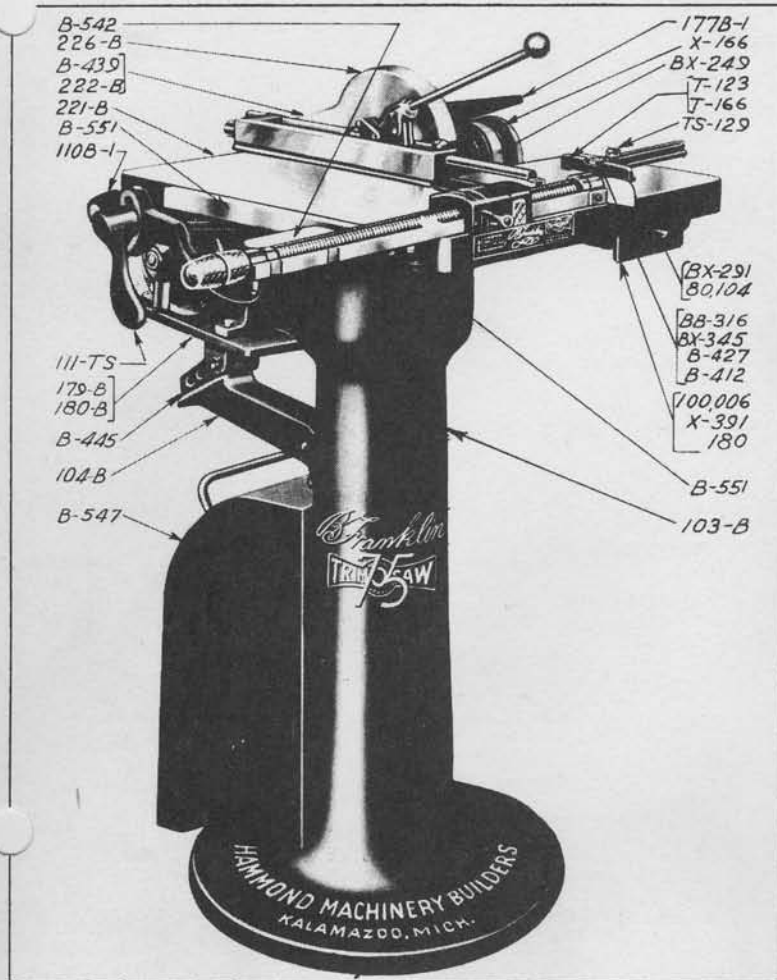
SET SCREW WRENCHES

- No. 10 Set screw wrench for dial.
- 5/16" Set screw wrench.
- 1/2" Set screw wrench.

HAMMOND BEN FRANKLIN TRIMOSAW PARTS AND SUPPLIES

FLOOR MODEL BFG-75 AND BENCH MODEL BG-60

Discontinued Model



BASE AND PEDESTAL

Parts not listed same as furnished on Mercury TrimO saw.

- 103-B Pedestal.
- 221-B Table.
- 177B-1 Table door.
- B-547 Chip box.
- B-551 Extension arm.
- BX-249 V-Belt.

SAW RAISING DEVICE

- 110B-1 Adjusting handle.
- 111-TS Locking handle.
- B-546 Adjusting handle stop pin with chain.

SAW GUARD

- 222-B Saw guard bracket.
- 226-B Saw guard.
- B-439 Saw guard stud.

MOTOR MOUNTING

- 104-B Motor bracket.
- 179-B Motor plate for 1/3 H.P. motor.
- 180-B Motor plate for 1/2 H.P. motor, and 25 cycle motor.
- 213-B 60 cycle motor pulley.
- 219-TS 25 cycle motor pulley.
- B-445 Motor plate hinge pin.

SWITCHES

- 180 Single phase switch box.
- BX-291 Single phase switch.
- X-391 Single phase switch box cover.
- 80104 3 phase switch.
- 100.006 3 phase switch box and cover.

SAW ARBOR ASSEMBLY

Same as furnished on Mercury TrimO saw Serial Nos. 502 through 581 with following exception.

- 161-B Saw arbor pulley.
- BX-204 Ball bearing.

MICROMETER GAUGE

Same as furnished on Mercury TrimO saw with following exception.

- TS-226 Pointer with screw machines Serial Nos. through 10436.
- TS-292 Pointer with screw machines Serial Nos. 10437 and up.
- TS-433 Scale model BG-60.
- TS-572 Micrometer screw model BG-60.
- B-542 Extension plate model BFG-75.
- B-550 Gauge bar model BFG-75.
- B-552 Gauge bar model BG-60.
- T-120 Outside screw bearing.
- T-120-1 Inside screw bearing.

WORK HOLDER CLAMP

Ben Franklin TrimO saw Serial Nos. 10437 and up furnished with same work holder clamp furnished with Mercury TrimO saw. Work holder clamp parts for Ben Franklin TrimO saw Serial Nos. through 10436 not listed below same as furnished with Mercury TrimO saw clamp.

- 215-B Clamp frame.
- B-536 Slot bar hook.
- TS-130 Clamp bar.
- TS-139 Spring stop.
- TS-144 Clamp bar.
- TS-181 Clamp rod.
- TS-191 3 pica loose end piece.
- TS-237 Spring retainer.
- TX-111 Clamp loading spring.
- TX-112 Compression spring.
- T-130 Toggle bracket.
- T-133 Clamp.

BATTER GAUGE

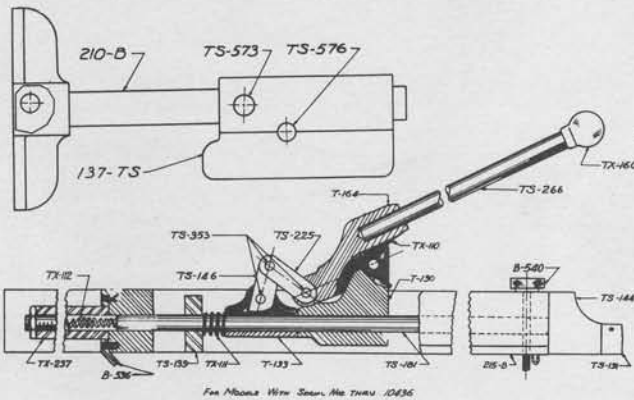
For Bench Model BG-60 Serial Nos. 10314 and up and Floor Models BFG-75 Serial Nos. 10301 and up.

- BB-316 Dial ball.
- BX-245 Dial ball spring.
- TS-129 Batter gauge screw.
- B-427 Dial pin.
- B-512 Dial.
- T-123 Batter gauge with mitering dial.
- T-166 Batter gauge not machined for dial.

Batter gauge furnished on Bench Models BG-60 through 10313 and Floor Models BFG-75 10300.

- 137-TS Batter holder.
- 210-B Batter with bar.
- TS-573 Batter screw.
- TS-576 Batter holder screw.

Batter Gauge Models BG-60 through 10313 and Models BFG-75 10300



BENCH MODEL BG-60

For parts not numbered see floor model above

- 105-B Base.
- 108B-1 Motor plate 1/2 H.P. motor.
- 108B-2 Motor plate 1/4 H.P. motor.
- B-508 Motor plate hinge plate.
- B-516 Chip drawer.
- B-546 Trimmer position stop pin.

SAW BLADES

Models BG-60 and BFG-75

- BX-200 6 1/2" dia. 70 swage tooth metal Dura-Blade.
- BX-227 6 1/2" dia. 35 swage tooth stereotype Dura-Blade.
- BX-233 6" dia. 36 tooth 6 pt. brass blade.
- BX-240 6" dia. 36 tooth 4 pt. brass blade.
- BX-264 6 1/2" dia. 70 set tooth wood Dura-Blade.
- BX-285 6 1/2" dia. 122 set tooth zinc Dura-Blade.

