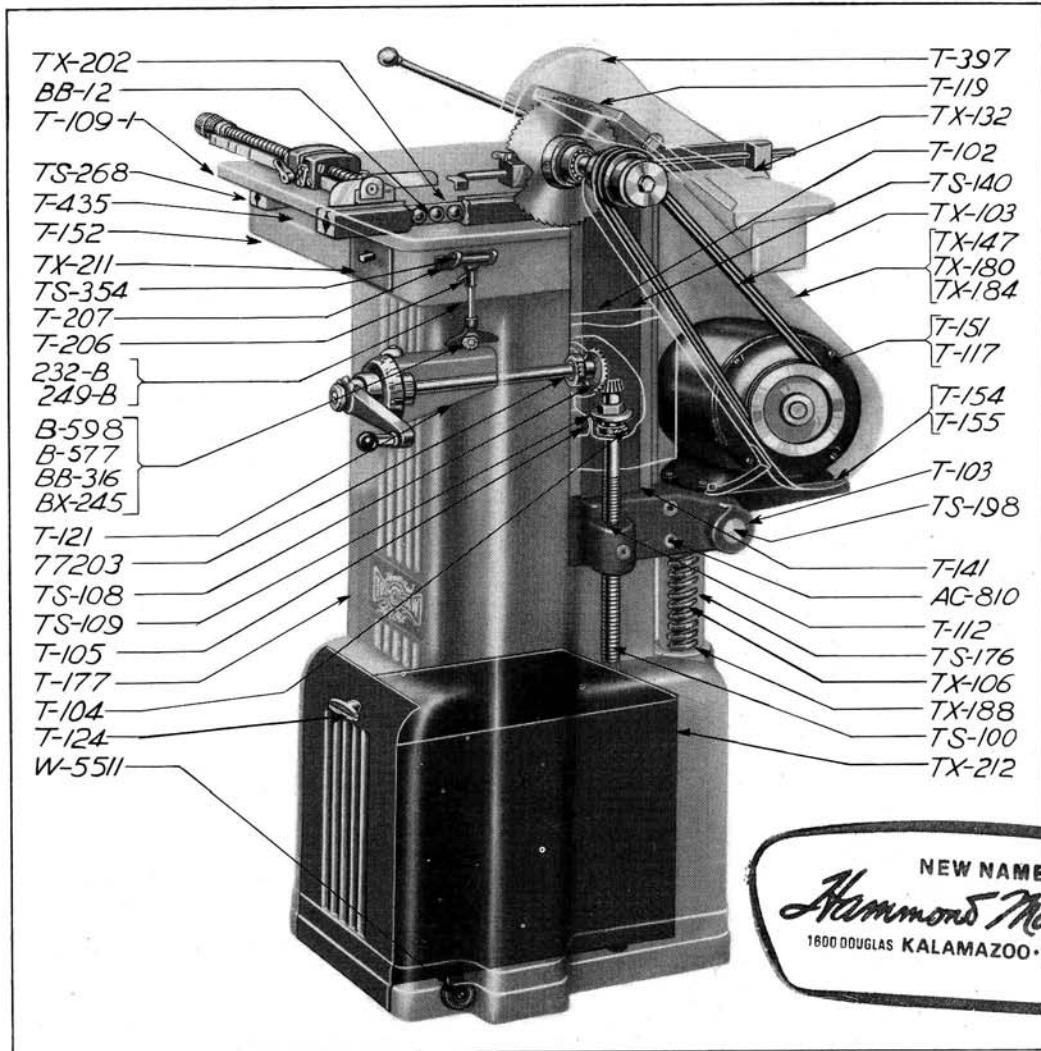


HAMMOND GLIDER TRIMOSAW

PARTS AND SUPPLY BULLETIN No. G-1041 R

BENCH MODELS, G-2 and G-22 — FLOOR MODELS, G-3, G-20, G-2F and G-22F



MODELS G-3 and G-20

For parts not listed below see inside spread.

PEDESTAL

AC-55	Table stop block screw
BX-303	Single phase and DC switch
BX-304	Three phase switch
TS-123	Saw door hinge pin
TX-211	Switch plate
T-119	Saw door
T-121	Handle bracket
T-152	Sub table
T-177	Pedestal
T-435	Table stop block, Serial Nos. 1052 and up

GLIDING TABLE

805	Rubber bumper with screw, Serial Nos. 1065 and up
BB-12	Table ball bearing
TS-133	Way adjusting screw
TS-268	Ball bearing table way
TS-296	Table locking screw
TX-175	Table lock screw spring
TX-202	Ball retainer, Serial Nos. 908 and up
T-109-1	Gliding table

MOTOR MOUNTING

AC-810	Motor support bracket screw
TS-141	Motor bracket locking gib
TS-176	Motor support with tube
TS-184	Support shaft collar
TS-198	Motor support shaft
TX-106	Motor support spring
TX-174	Motor support tube spring
TX-188	Washer with screws

T-103	Motor support bracket
T-112	Saw raising screw nut
T-117	Motor pulley for 60 cycle and DC motor
T-151	Motor pulley for 25-50 cycle motor
T-154	Motor base 1 H.P. motor
T-155	Motor base for 1/2 H.P. motor

BELT AND BELT GUARD

TX-103	V-belt
TX-147	Belt guard
TX-172	Belt guard screw
TX-180	Belt guard cover for 60 cycle and DC motor
TX-184	Belt guard cover for 25 and 50 cycle motor

CHIP BUGGY

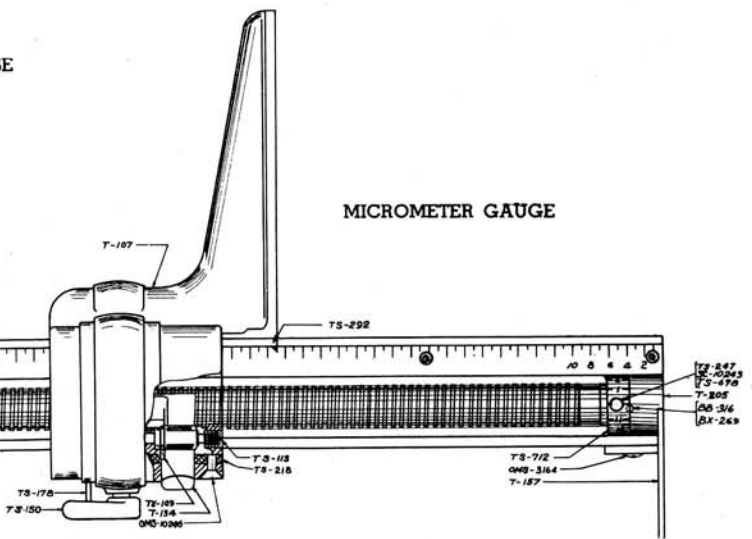
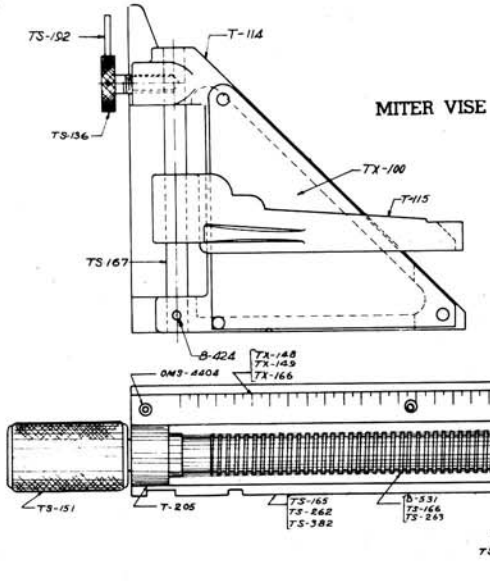
TX-212	Chip buggy
T-124	Chip buggy handle
W-5511	Chip buggy wheel with pin

SAW RAISING DEVICE Models G-3 and G-20

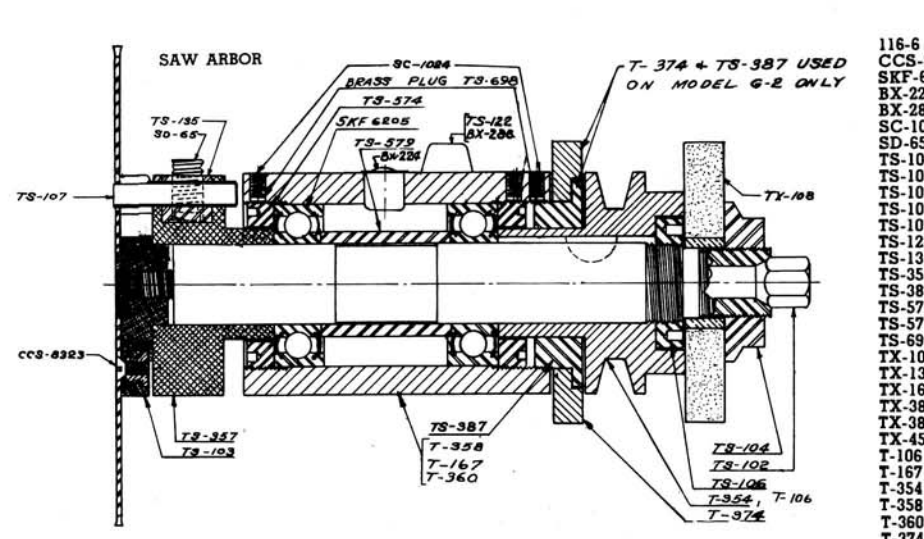
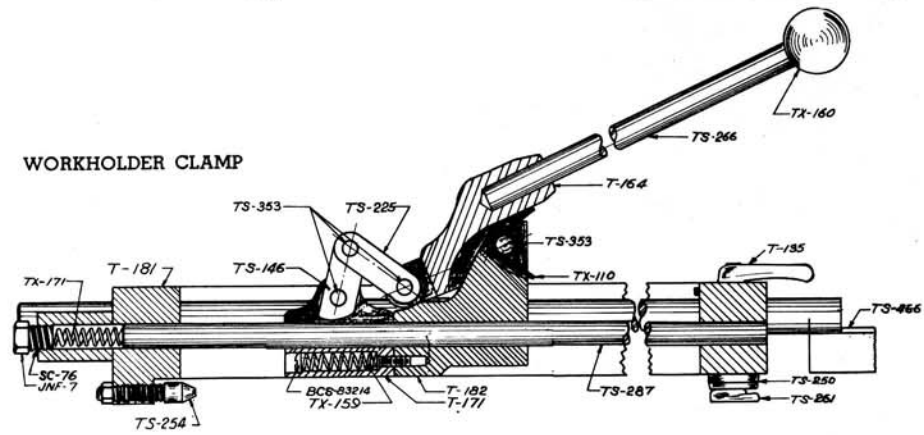
See G-2 and G-2F Saw Raising Device (inside spread) for parts not listed below.

77203	Ball bearing
TS-100	Saw raising screw
TS-108	Bevel gears
TS-109	Bearing cap
TS-130	Bearing spacer
TS-140	Saw hanger gib
T-102	Saw hanger bracket
T-104	Bevel gear guard
T-105	Bearing block
T-111	Hand crank with collar TS-138 for Serial Nos. up thru 950

HAMMOND MACHINERY BUILDERS, INC.
1600 DOUGLAS AVE. • • • KALAMAZOO, MICHIGAN



- | | | | | |
|--|--------|--|---------|---------------------------------|
| MICROMETER GAUGE
For All Glider Models | TS-247 | Dial spring plug | TX-166 | 135 pica micrometer gauge scale |
| OMS-3164 | TS-262 | 135 pica gauge bar | B-531 | 62 pica micrometer screw |
| OMS-4404 | TS-263 | 135 pica micrometer screw | T-107 | Finger |
| OMS-10246 | TS-267 | Extension plate for 135 pica gauge,
Models G-3 and G-20 | T-134 | Finger nut |
| AC-54 | TS-292 | Pointer and screw Models G-3 and G-20
Serial Nos. 890 and up and all Models
G-2 G-2F, G-22 and G-22F | T-120-2 | Center bearing for TS-263 |
| BB-316 | TS-382 | 62 pica gauge bar | T-157 | Thumb guard |
| BX-269 | TS-415 | 78 pica micrometer extension plate | T-205 | End bearing with bushing |
| SC-10243 | TS-416 | 135 pica micrometer gauge extension
plate Models G-2, G-2F, G-22, G-22F | | MITER VISE |
| TS-113 | TS-698 | Dial brass plug | | For All Glider Models |
| TS-150 | TS-712 | Dial | TS-136 | Knurled screw |
| TS-151 | TX-109 | Finger nut spring | TS-167 | Miter vise rod |
| TS-164 | TX-148 | 78 pica micrometer gauge scale | TS-192 | Knurled screw pin |
| TS-165 | TX-149 | 62 pica micrometer gauge scale | TX-100 | Instruction plate with screws |
| TS-166 | | | B-424 | Pin |
| TS-178 | | | T-114 | Miter vise |
| TS-218 | | | T-115 | Miter vise clamp |



- | | |
|-----------|--|
| | WORKHOLDER CLAMP
Models G-3 and G-20, Serial Nos. 869 and up.
All Models G-2, G-2F, G-22 and G-22F. |
| BCS-83214 | Pressure spring screw |
| JNF-7 | Lock nut for SC-76 |
| SC-76 | Pressure spring adjusting screw |
| TS-146 | Clamp jaw |
| TS-225 | Toggle link |
| TS-250 | Locating plug |
| TS-254 | Adjusting screw |
| TS-261 | Locking cam |
| TS-286 | Toggle lever handle |
| TS-287 | Clamp rod |
| TS-353 | Hinge pin with cotter keys |
| TS-466 | Clamp rod with end |
| TX-110 | Handle spring |
| TX-159 | Clamp loading spring |
| TX-160 | Lever handle ball |
| TX-171 | Pressure spring |
| T-135 | Locking handle with pin |
| T-164 | Toggle lever |
| T-171 | Clamp |
| T-181 | Clamp frame |
| T-182 | Bracket |
| | SAW ARBOR
For All Glider Models |
| 116-6 | Oil cup—Models G-3 and G-20 |
| CCS-8323 | Sawhead screws |
| SKF-6205 | Arbor ball bearing |
| BX-224 | Saw arbor oiler—Models G-2, G-2F, G-22, G-22F |
| BX-288 | Saw door bumper and screw—Models G-2 and G-2F |
| SC-1024 | Set screws |
| SD-65 | Trimmer wedge screw |
| TS-102 | Sawhead bolt |
| TS-103 | Sawhead |
| TS-104 | Grinding wheel nut |
| TS-106 | Pulley nut |
| TS-107 | Trimmer tool |
| TS-122 | Saw door bumper and screw—Models G-3 and G-20 |
| TS-135 | Trimmer wedge plug |
| TS-357 | Saw arbor with head |
| TS-387 | Clamp collar—Models G-2 and G-2F |
| TS-574 | Bearing retainer screw |
| TS-579 | Bearing spacer |
| TS-698 | Brass plug |
| TX-108 | Grinding wheel |
| TX-130 | Trimmer position marker—Models G-3 and G-20 |
| TX-162 | Chip guard—Models G-3 and G-20 |
| TX-380 | Chip guard—Models G-2 and G-2F |
| TX-389 | Trimmer position marker—Models G-2 and G-2F |
| TX-453 | Chip guard—Models G-22 and G-22F |
| T-106 | Saw arbor pulley—Models G-3 and G-20 |
| T-167 | Saw arbor housing—Models G-3 and G-20 |
| T-354 | Saw arbor pulley—except Models G-3 and G-20 |
| T-358 | Saw arbor housing—Models G-2 and G-2F |
| T-360 | Saw arbor housing—Models G-22 and G-22F |
| T-374 | Guard support—Models G-2 and G-2F |

PEDESTAL

Bench Models G-2 and G-22
Floor Models G-2F and G-22F

- BX-303 Single phase and DC switch
- BX-304 Three phase switch
- TS-381 Table door pin—Models G-2 and G-2F
- TX-113 Chip buggy for strip material cabinet
- TX-213 Chip buggy
- TX-384 Chip drawer—Models G-2 and G-22
- TX-441 Switch plate
- T-124 Chip buggy handle
- T-353 Saw door—Models G-2 and G-2F
- T-357 Base—Models G-2 and G-2F
- T-359 Base—Models G-22 and G-22F
- T-419 Pedestal
- T-434 Table stop block with screws—Models G-2 and G-2F, Serial Nos. 605 and up. Models G-22 and G-22F, Serial Nos. 147 and up

GLIDING TABLE

- 805 Rubber bumper with screws—Models G-2 and G-2F, Serial Nos. 589 and up. Models G-22 and G-22F, Serial Nos. 143 and up
- BB-34 Table ball bearing
- TX-378-1 Ball retainer—Models G-2 and G-2F, Serial Nos. 524 and up. Models G-22 and G-22F, Serial Nos. 120 and up
- T-351 Gliding table

BELT AND BELT GUARD

Models G-2 and G-2F

Models G-22 and G-22F

- | | |
|--------------------------------|--------------------------------|
| TS-376 Washer | TX-172 Guard to hanger screw |
| TS-377 Bushing | TX-370 Belt guard |
| TX-371 Belt guard | TX-400 Belt guard cover |
| TX-401 Belt guard cover | T-396 Grinding wheel guard |
| T-361 Swivel link | |
| FHP-2400 V-belt 1/2 H.P. motor | FHP-2400 V-belt 1/2 H.P. motor |
| TX-103 V-belt 1/2 H.P. motor | TX-103 V-belt 1/2 H.P. motor |

SWIVEL BATTER AND LINE-UP GAUGE

Models G-3 and G-20—Serial Nos. 1111 and up
Models G-2 and G-2F—Serial Nos. 700 and up
Models G-22 and G-22F—Serial Nos. 180 and up

- | | |
|---|------------------------|
| 232-B Batter with dial and rod | TS-354 Pivot pin |
| 249-B Batter with rod (not machined for dial) | TX-215 Friction washer |
| BB-316 Dial ball | B-577 Dial |
| BX-245 Dial ball spring | B-598 Dial pin |
| BX-297 Spring | T-206 Bracket |
| TS-345 Bushing for T-206 | T-207 Bracket support |

SAW GUARD

For All Glider Models

- 704-9 Spring washer
- SC-56 Set screw for TS-230
- TS-230 Saw guard screw
- TS-231 Brass plug
- TX-132 Saw guard bumper with screw—Models G-3 and G-20
- T-397 Saw guard with bushing—Except G-22 and G-22F
- T-398 Saw guard with bushing—Models G-22 and G-22F

SAW RAISING DEVICE

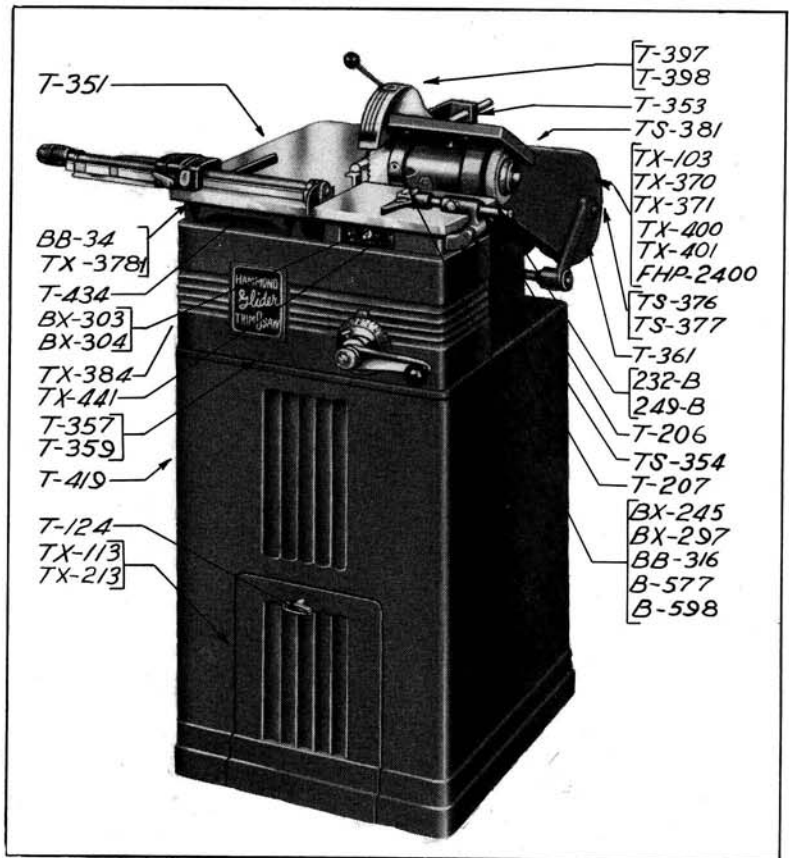
Bench Model G-2 and Floor Model G-2F

- | | |
|---|---------------------------------|
| 5203 Ball bearing | TS-373 Bearing spacer |
| OMS-510 Handle screw | TS-375 Dial lock screw |
| AH-410 Bracket screw | TS-392 Saw raising sector shaft |
| NC-8 Hexagon nut | TS-393 Raising shaft pin |
| SP-56 Spring retainer screw | TS-411 Crank handle pin |
| TS-121 Crank washer | TS-412 Crank handle extension |
| TS-222 Spring retainer | TX-145 Fiber washer |
| TS-223 Clutch plate | TX-146 Clutch spring |
| TS-372 Saw raising shaft | TX-160 Ball crank handle |
| TX-364 Dial with screw—Models G-3 and G-20, Serial Nos. 1119 and up
Models G-2 and G-2F Serial Nos. 702 and up | |
| TX-394 Worm | |
| B-1212 Roller bearing | |
| T-111 Hand crank with collar—Models G-3 and G-20, Serial Nos. up thru 950 | |
| T-113 Dial—Models G-3 and G-20, Serial Nos. up thru 1118 | |
| T-362 Bearing bracket | |
| T-363 Bearing bracket cap | |
| T-364 Dial—Models G-2 and G-2F, Serial Nos. up thru 701 | |
| T-369 Saw raising sector | |
| T-414 Hand crank—Models G-3 and G-20, Serial Nos. 951 and up
and all Models G-2, G-2F, G-22, and G-22F | |
| T-450 Dial frame—Models G-3 and G-20, Serial Nos. 1119 and up
Models G-2 and G-2F, Serial Nos. 702 and up | |

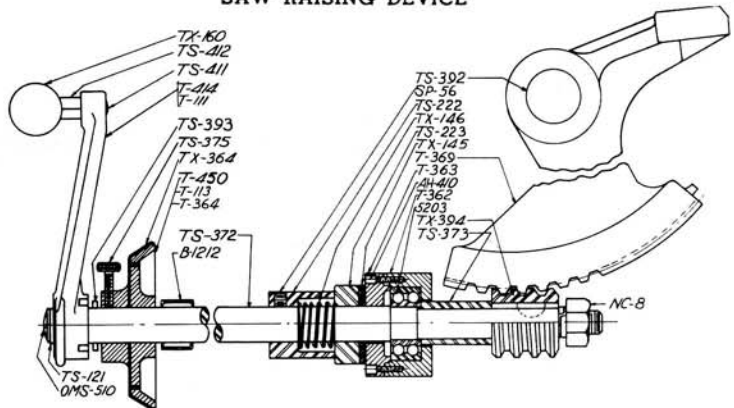
MOTOR MOUNTING

Bench Models G-2 and G-22
Floor Models G-2F and G-22F

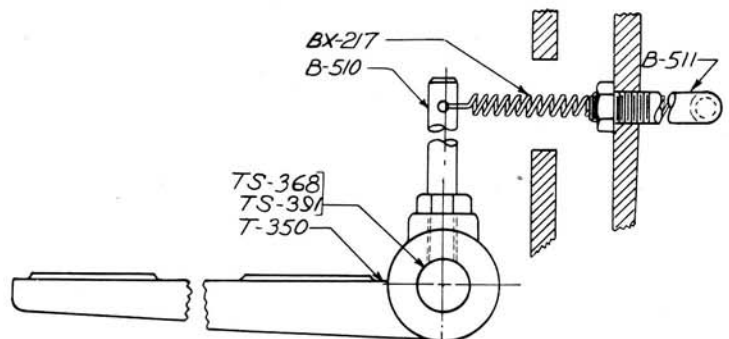
- BX-217 Balance spring
- TS-368 Motor base shaft—Models G-22 and G-22F
- TS-391 Motor base shaft—Models G-2 and G-2F
- TX-460 25 and 50 cycle motor pulley
- B-510 Balance spring stud
- B-511 Balance spring post
- T-350 Motor base
- T-425 1/2 H.P. 60 cycle motor pulley
- T-427 1/2 H.P. 25 and 50 cycle motor pulleys
- T-455 1/2 H.P. 25 and 50 cycle motor pulleys
- T-456 1/2 H.P. 60 cycle motor pulley

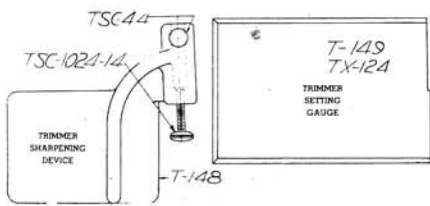


SAW RAISING DEVICE



MOTOR MOUNTING



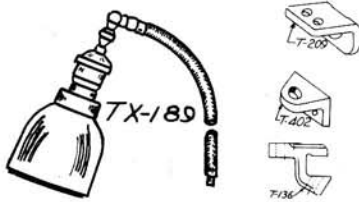


TRIMMER SETTING GAUGE

- TX-124 Instruction plate with screws
- T-149 Trimmer setting gauge

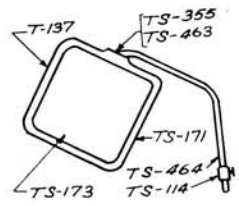
TRIMMER SHARPENING DEVICE

- TSC-1024-14 Adjusting screw
- TSC-44 Thumb screw
- T-148 Grinding device



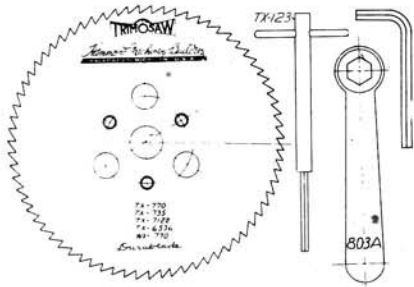
LIGHT FIXTURE

- TC-520 Thumb screw—Models G-3 and G-20
- TX-189 Lamp assembly
- T-136 Lamp and guard bracket—Models G-3 and G-20, Serial Nos. up thru 1108
- Models G-2 and G-2F, Serial Nos. up thru 755
- T-209 Lamp and guard bracket—Models G-3 and G-20, Serial Nos. 1109 and up
- Models G-2 and G-2F, Serial Nos. 756 and up
- T-402 Lamp bracket—Models G-22 and G-22F



SEE THRU GUARD

- Models G-2, G-2F, G-3 and G-20
- TS-114 Guard arm collar
 - TS-171 Glass clamp
 - TS-172 Leather—Model G-20
 - TS-173 Glass
 - TS-355 Socket clamp—outer
 - TS-463 Socket clamp—inner
 - TS-464 Guard arm
 - T-137 Glass guard frame



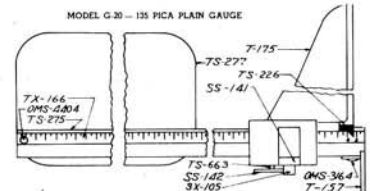
SAW BLADES

For All Glider Models

- TX-735 7" dia. 35 swage tooth stereotype Dura-Blade
- TX-770 7" dia. 70 swage tooth metal Dura-Blade
- WX-770 7" dia. 70 set tooth wood Dura-Blade
- TX-7122 7" dia. 122 set tooth zinc Dura-Blade
- TX-6536 6 1/2" dia. 36 tooth all purpose blade

WRENCHES

- TX-123 T wrench
- 803-A Box wrench
- 5/16" Saw guard screw Allen wrench
- 10/24" Micrometer screw dial Allen wrench
- 1/4" Allen wrench

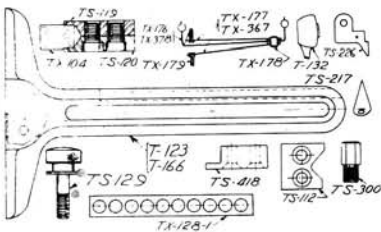


135 PICA PLAIN GAUGE

Model G-20 Glider TrimOscaw

- OMS-3164 Thumb guard screw
- OMS-4404 Pica scale screw
- SS-141 Finger clamp
- SS-142 Clamp screw
- SX-105 Spring
- TS-226 Pointer
- TS-275 Gauge bar
- TS-277 Extension plate
- TS-663 Pin
- TX-166 Pica scale
- T-157 Thumb guard
- T-175 Gauge finger

EARLIER DESIGNS OF VARIOUS PARTS AND ASSEMBLIES



- TS-112 Table ball bearing way end with screws—Models G-3 & G-20, Serial Nos. up thru 868
 - TS-300 Table stop screw—Models G-3 and G-20, Serial Nos. 908 thru 1051
 - TS-418 Table stop on way end with screws—Models G-2 and G-2F, Serial Nos. up thru 603, Models G-22 and G-22F, Serial Nos. up thru 146
 - TX-128-1 Table ball bearing race—Models G-3 and G-20, Serial Nos. up thru 868
 - T-132 Raising saw dial pointer with screw—Models G-3 and G-20, Serial Nos. up thru 1096
- TABLE STOP**
- Models G-3 and G-20, Serial Nos. up thru 1064
 - Models G-2 and G-2F, Serial Nos. up thru 588
 - Models G-22 and G-22F, Serial Nos. up thru 143
 - TS-119 Upper table stop
 - TS-120 Lower table stop
 - TX-104 Table rubber bumper

- BATTER GAUGE**
- Models G-3 and G-20, Serial Nos. up thru 1099
 - Models G-2 and G-2F, Serial Nos. up thru 699
 - Models G-22 and G-22F, Serial Nos. up thru 179
 - TS-129 Batter gauge screw
 - T-123 Batter gauge with mitering dial
 - T-166 Batter gauge not machined for dial

TABLE BALL BEARING RETAINER WITH LINK MECHANISM

- Models G-3 and G-20, Serial Nos. 869 thru 907
- Models G-2 and G-2F, Serial Nos. up thru 523
- Models G-22 and G-22F, Serial Nos. up thru 119
- TX-176 Ball retainer
- TX-177 Link
- TX-178 Rivet with washer
- TX-179 Screw with washer
- TX-367 Link
- TX-378 Ball retainer

WORKHOLDER CLAMP

Models G-3 and G-20, Serial Nos. up thru 731
Parts not listed below same as furnished on workholder clamp shown on Page 2

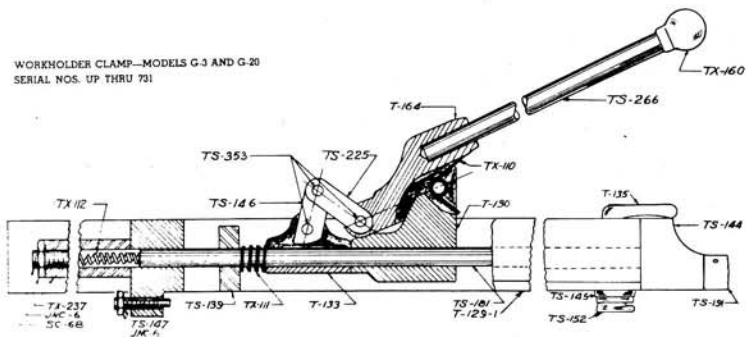
- JNF-6 Adjusting screw nut
- SC-68 Retainer adjusting screw
- TS-139 Spring stop
- TS-145 Locating plug
- TS-147 Adjusting screw
- TS-152 Locking cam
- TS-191 3 pica clamp end
- TS-237 Spring retainer
- TX-111 Clamp loading spring
- TX-112 Compression spring
- T-129-1 Frame
- T-130 Toggle bracket
- T-133 Clamp
- T-144 Clamp bar

WORKHOLDER CLAMP

Models G-3 and G-20 Serial Nos. 732 thru 868
Parts not listed below same as furnished on workholder clamp shown above or on Page 4

- JNC-5 Adjusting screw nut
- TS-255 Clamp rod sliding key
- TS-256 Swivel end piece
- TS-257 Clamp bar and guide
- TS-289 Clamp rod
- T-172 Toggle bracket
- T-173-2 Frame

WORKHOLDER CLAMP—MODELS G-3 AND G-20
SERIAL NOS. UP THRU 731



WORKHOLDER CLAMP—MODELS G-3 AND G-20
SERIAL NOS. 732 THRU 868

